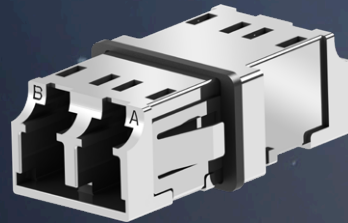


# LC Metal Adapter

*Built to Withstand. Designed to Perform.*

The **ACON OPTICS** LC Metal Adapter is designed for environments that demand enhanced durability and reliable optical performance. Featuring a robust metal housing, it provides excellent mechanical strength and long-term stability, with optional EMI shielding available for applications requiring additional electromagnetic interference protection. Engineered for dependable performance, the LC Metal Adapter is well suited for aerospace, defense, industrial, data center, and telecommunications applications, where durability and signal integrity are critical.



▲ LC Metal Duplex Adapter



▲ LC Metal Quad Adapter

## Features

- Durable Metal Housing
- High Precision Alignment
- Compatible with SC Footprint
- Optional EMI Shielding

## Applications

- Industrial
- Defense
- Telecommunications
- FTTx Deployments
- Aerospace
- Data Centers

## ACON OPTICS COMMUNICATIONS INC.

### TAIWAN—HEADQUARTER

5F, No.4, Aly. 9, Ln. 45, Baoxing Rd., Xindian Dist., New Taipei City 231, Taiwan  
Tel:+886-2-2917-7668  
contactus@aconoptics.com

### CHINA—TIANJIN

No.32, Taixiang Road, TEDA, Tianjin, China.  
Tel:+86-22-6633-2010  
contactus@aconoptics.com

### CHINA—SHENZHEN

No. 2, Lanjing Middle Road, Pingshan District, Shenzhen City, Guangdong, China  
Tel:+86-755-3382-8888  
contactus@aconoptics.com

### AMERICA

#### Advanced-Connectek U.S.A. Inc.

3002 Dow Ave, Suite 506, Tustin, California 92780, U.S.A.  
Tel: +1-714-573-1920  
info@acon-us.com

[www.aconoptics.com](http://www.aconoptics.com)