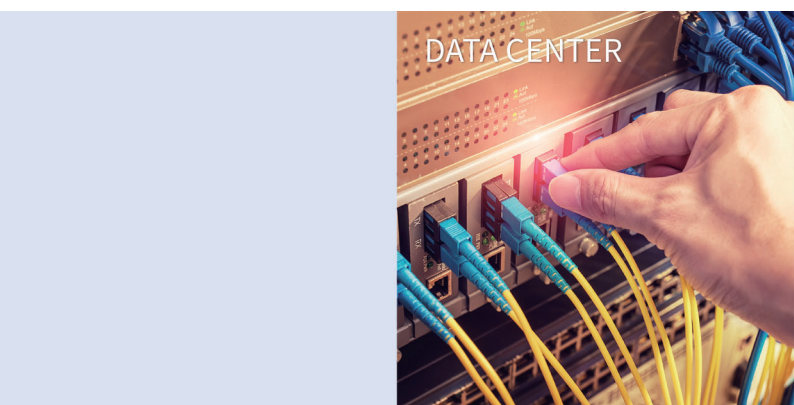
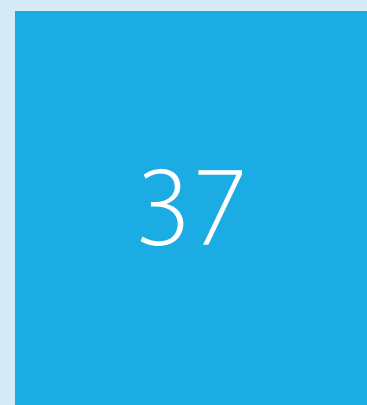
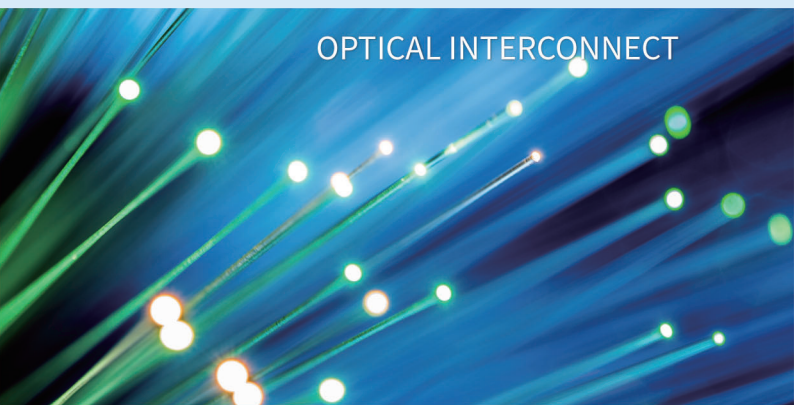


ATTENUATOR

LC / SC / FC

LC / SC / FC Attenuator38



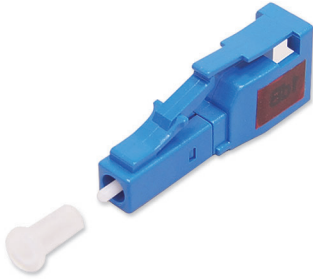
LOOPBACK

LC / SC / MPO

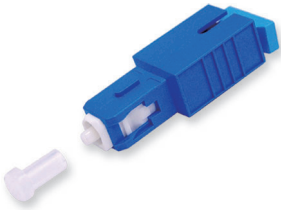
LC / SC / MPO Loopback39

Attenuator LC / SC / FC

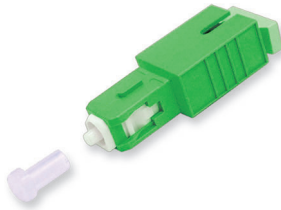
LC Attenuator - LC/PC



SC Attenuator - SC/PC



SC Attenuator - SC/APC



FC Attenuator - FC/PC



FC Attenuator - FC/APC



Description

ACON OPTICS high quality and performance attenuators are designed to give accurate attenuation over a wide range of wavelengths. The male-female plug type configuration can be used directly on the end of a patch cord, which in turn can insert directly into an adaptor. Available in LC, SC, FC, ST and MU connector styles with PC or APC finish, attenuators providing ultra-low return loss and are available from 1dB to 40dB.

Features

- Excellent environmental stability
- Attenuation stability
- Excellent return loss
- Polarization insensitive
- Easy installation
- Telcordia GR-910-core requirement
- Bandwidth : 1310 / 1550±40nm / IL 1~5dB±0.75dB / 6~10dB±10dB / 11~15dB / 16~20dB±15% dB / >20dB

Applications

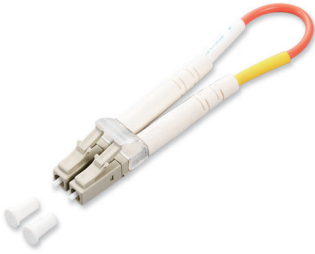
- LAN & WAN
- Telecommunication networks
- Fiber optic sensors
- Test & Measurement
- FTTx
- CATV

Attenuator Specification

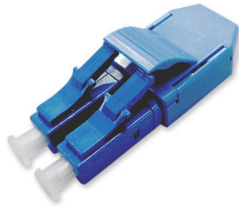
Connector Type	Attenuation Values (dB)		Wavelength (nm)	
LC / PC	0	10	1310/1550nm(SM)	
LC / APC	1	11		
SC / PC	2	12		
SC / APC	3	13		
FC / PC	4	14		
FC / PC	5	15		
FC / APC	6	16		850/1300nm(MM)
ST	7	17		
MU	8	18		
	9	19		
		20		

Loopback LC / SC / MPO

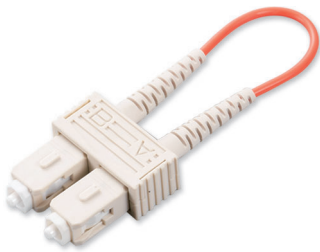
● LC Loopback



● LC Loopback with Shell



● SC Loopback



● SC Loopback with Shell



● MPO Loopback



● MPO Loopback with Shell



Description

Fiber OPTICS Loopbacks is typically used for fiber optic testing applications or network restorations. It can detect potential bug by testing signal return of network or system.

Features

- Compact design
- Precise attenuation value
- High durability and low loss performance
- Available in singlemode and multimode

Applications

- Instrumentation
- Telecommunication networks
- Local area networks (LAN)
- Wide area networks (WAN)
- Data processing networks
- CATV

Loopback Specification

Mode	Connector Type	DB Type	Shell Color	Jacket Type	Diameter (mm)
SM G657 A2	LC / PC Duplex	0dB SM	Black	PVC (OFNR)	0.25
SM G657 B3	SC / PC Duplex	1dB	Blue(LC)	PVC (OFNP)	0.6
OM1 (62.5/125)	MTRJ Female	2dB	Beige(LC)	LSZH	0.9
OM2 (50/125)	MPO	0dB MM	Aqua(LC)	LSZH (OFNR)	2.0
OM3 (50/125)	MTP				3.0
OM4 (50/125)					